

# iGrafX IDEFO<sup>®</sup>2009

## Leverage the Power of IDEFO

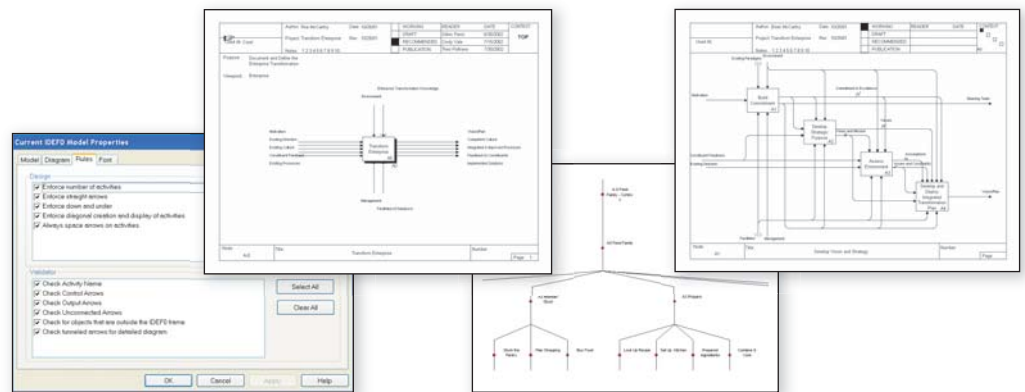
*iGrafX IDEFO<sup>®</sup> is an add-on environment for the iGrafX family of process modeling solutions that enables users to create fully compliant IDEFO diagrams. With features such as model templates, model setup wizard and correct-by-construction rules enforcement, you can focus on capturing the details of your processes and spend less time learning a new tool.*

### iGrafX IDEFO is ideal for:

- IDEFO Professionals
- Aerospace
- Financial Services
- Government
- ISO Registration

### Key Features

- Model Setup Wizard
- Rules Enforcement
- Customizable Model Templates
- Glossary of Terms
- FEO, Text and Node Tree Diagrams
- Process Diagrams
- Web, PDF and Microsoft<sup>®</sup> Office Publishing



### IDEFO as a Foundation for Process Improvement

IDEFO (Integration Definition Language 0) is defined by the Integration Definition for Function Modeling (IDEFO) Standard published by the Federal Information Processing Standards Publication (FIPS PUBS) on December 21, 1993.

iGrafX IDEFO enables users to exploit the synergies of IDEFO models side by side with process maps and simulations. As a component of the iGrafX family of solutions, iGrafX IDEFO diagrams can directly link to swimlane<sup>®</sup> process maps. This unique feature allows system architects and business analysts to leverage the power of two diagramming notations to facilitate communication of processes and increase the comprehension of organizational processes.

iGrafX IDEFO is a perfect choice for organizations looking for powerful, easy to use IDEFO modeling on its own or as a tool in a broader process improvement initiative.

### A Pillar of Process Excellence

iGrafX IDEFO is uniquely designed to meet the requirements of IDEFO modeling while integrating with other iGrafX components for a unified approach to process excellence. The iGrafX solution will help you bridge the gap between the major organization constituencies—IT, process initiatives and business analysts—to ensure a level of process consistency, management, history and control across the enterprise.

### Global Headquarters

7585 SW Mohawk Street  
Tualatin, OR 97062  
Tel.: 503.404.6050  
Fax: 503.691.2451  
[info@iGrafX.com](mailto:info@iGrafX.com)  
[www.iGrafX.com](http://www.iGrafX.com)

### European Headquarters

Dr.-Johann-Heitzer-Str. 2  
85757 Karlsfeld b. München  
Germany  
Tel.: +49 (0)8131 3175 100  
Fax: +49 (0)8131 3175 101  
[info.de@iGrafX.com](mailto:info.de@iGrafX.com)  
[www.iGrafX.de](http://www.iGrafX.de)

For contact details visit:  
[www.iGrafX.com/contact](http://www.iGrafX.com/contact)